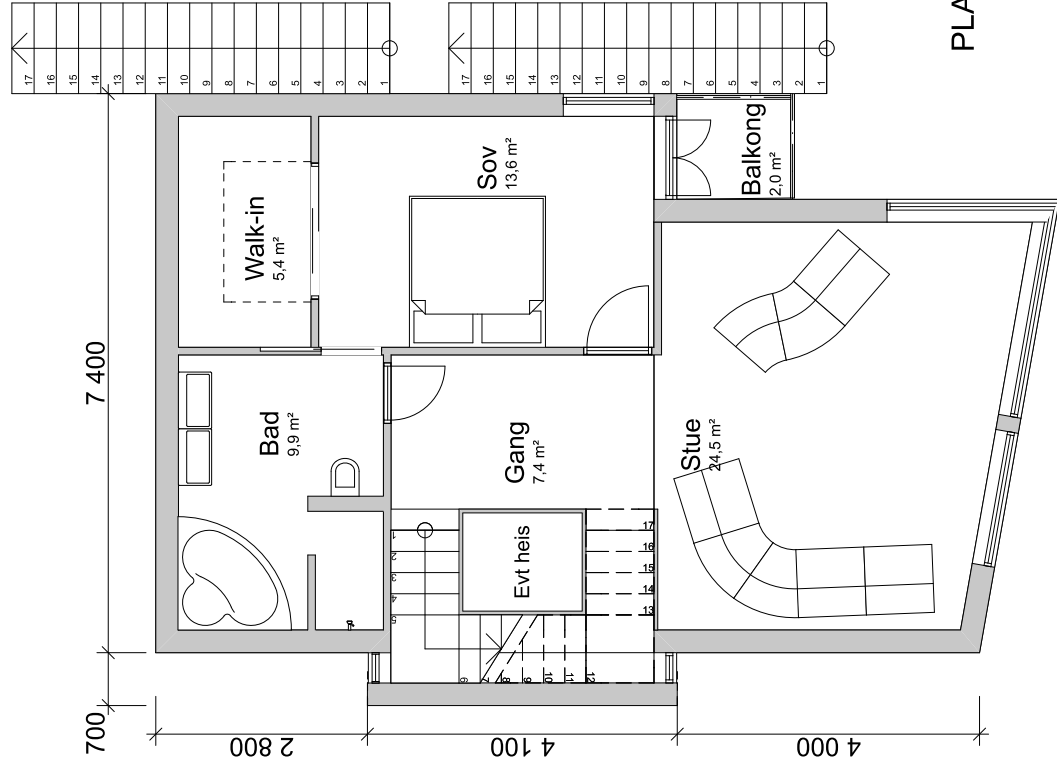
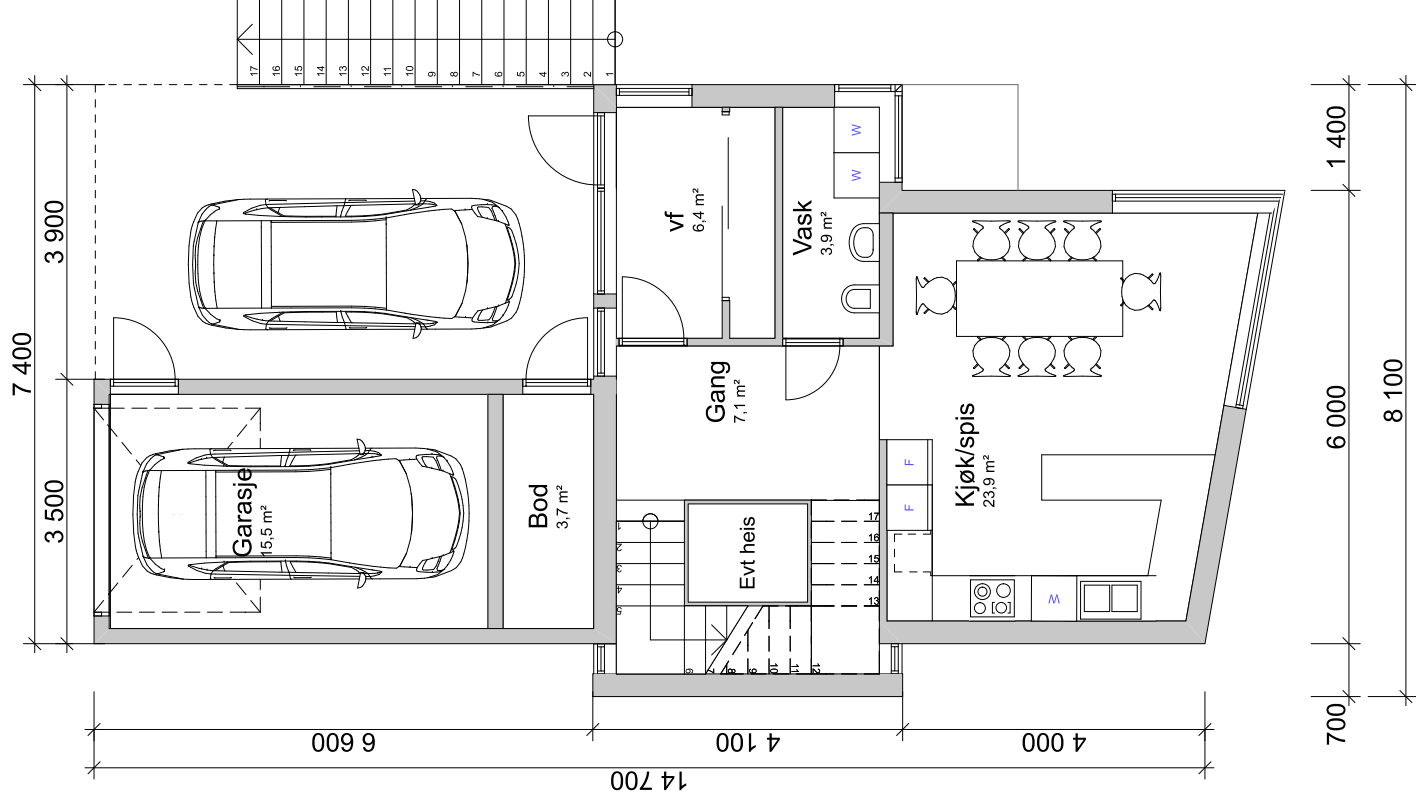


PLAN 2. U-ETASJE

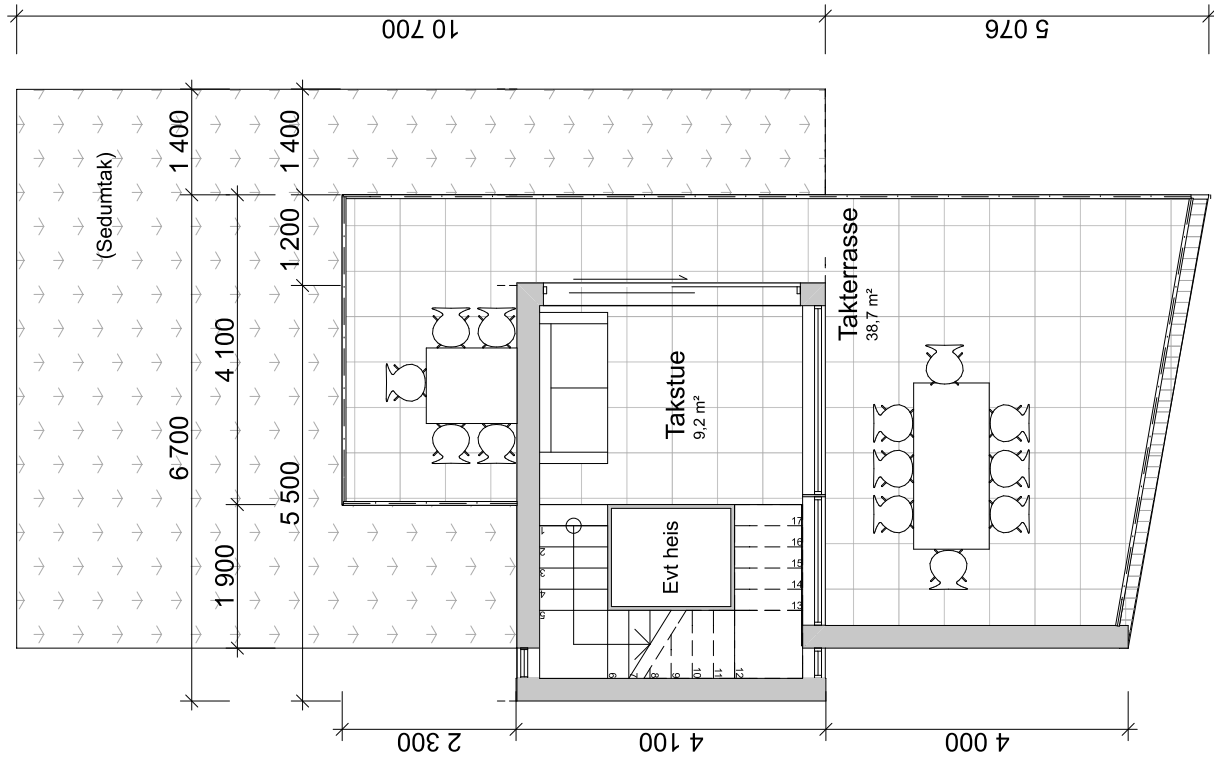


PLAN 1. U-ETASJE

- BRA 1. u-etasje: 67,6 m²
- BRA 2. u-etasje: 70,8 m²
- BRA 1. etasje: 90,0 m²
- BRA taketasje: 37,7 m²
- Sum BRA: 266,1 m²**



PLAN 1. ETASJE



PLAN TAKETASJE