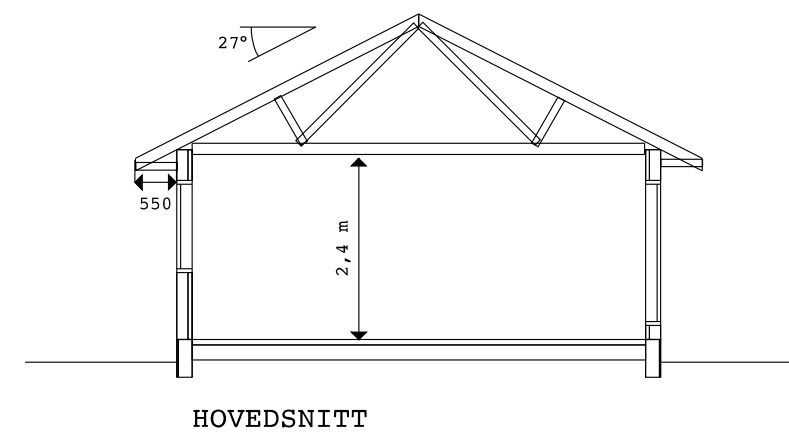
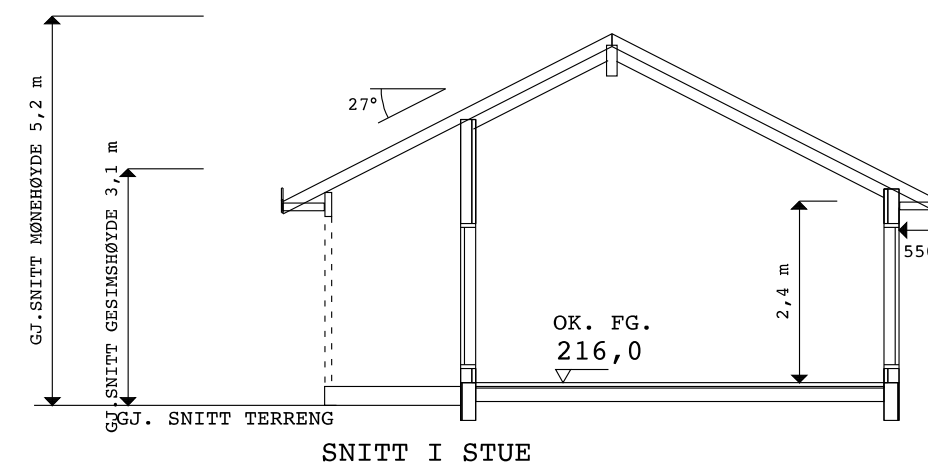
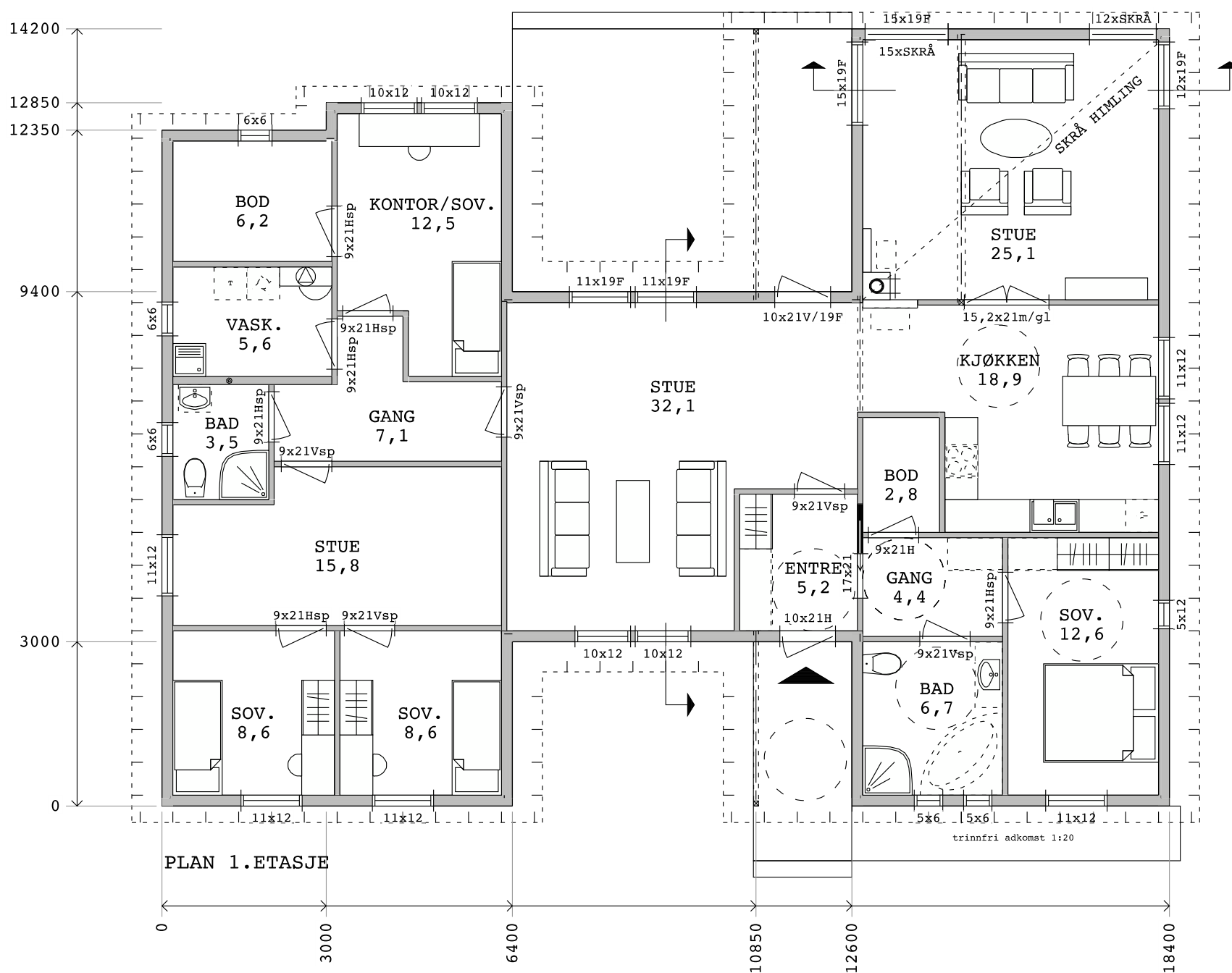


SØRVIK



$$\% \text{ BYA} = \frac{220,6 + 50(\text{GARASJE}) \text{ m}^2 \times 100}{1021 \text{ m}^2 \text{ TOMT}} = 27 \%$$

BYA	220,6 m ²
Bygningens	BRA
PLAN 1. ETJ	185,8 m ²
OVERBYGD UTEAREAL	4,3 m ²
SUM	190,1 m ²