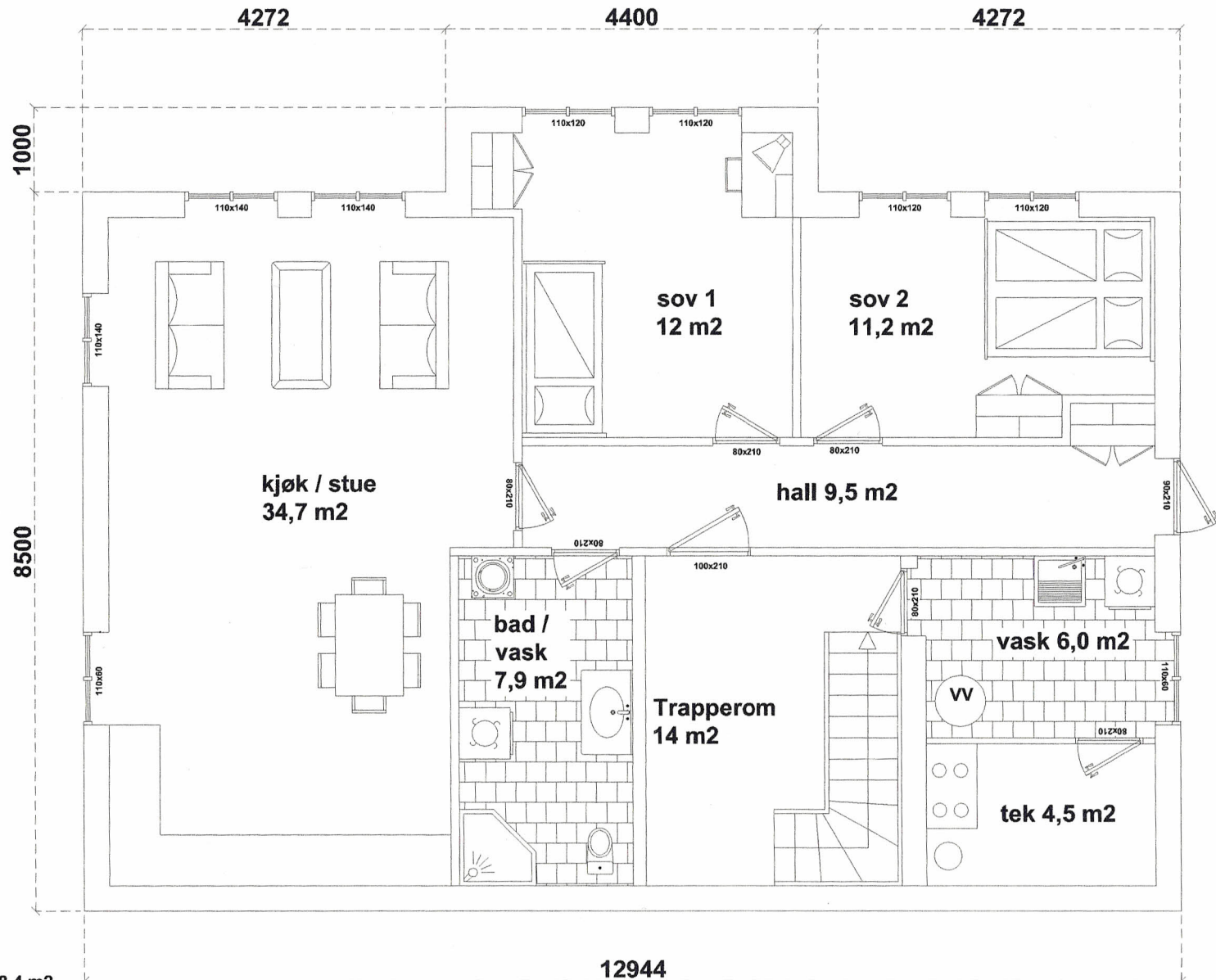
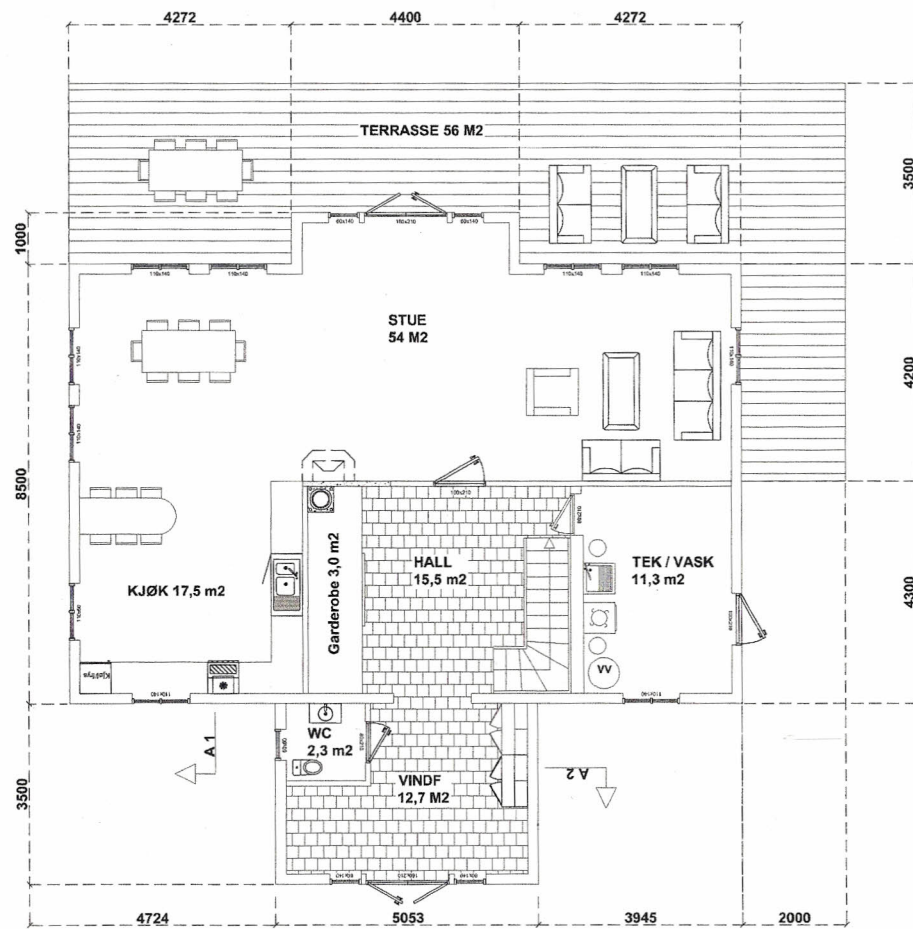


V etg



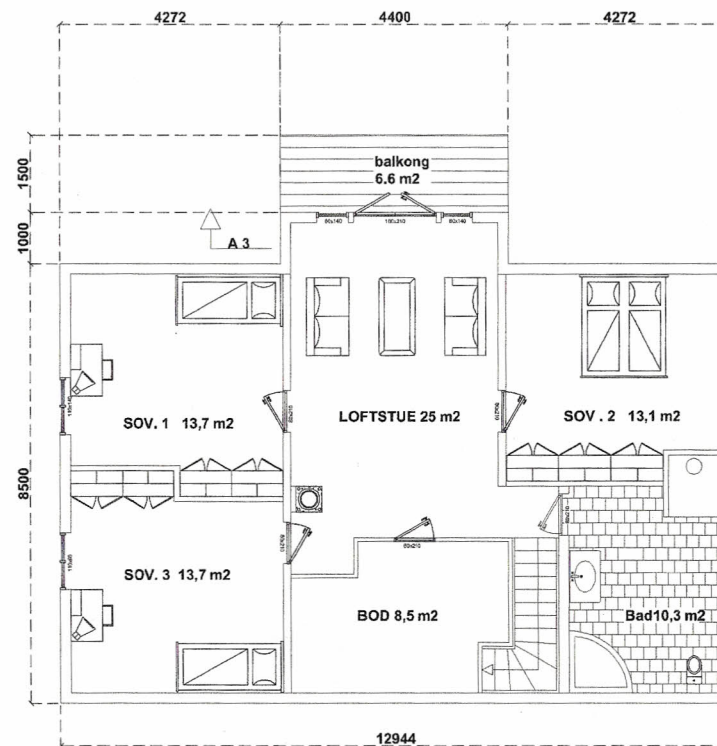
BYA	:	188,4 m ²
BRA u.etg.	:	103,4 m ²
BRA 1 etg.	:	121,9 m ²
BRA 2 etg.	:	86,6 m ²
BRA tot.	:	311,9 m ²

1 etg



1 etg.

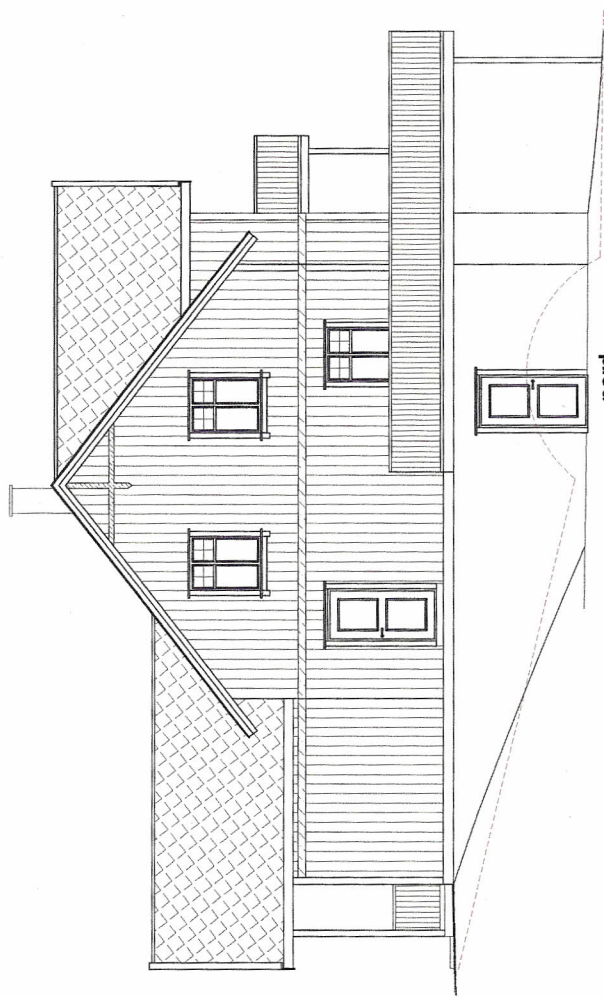
2. etg



BYA	:	188,4 m2
BRA u.etg.	:	103,4 m2
BRA 1 etg.	:	121,9 m2
BRA 2 etg.	:	86,6 m2
BRA tot.	:	311,9 m2



vest



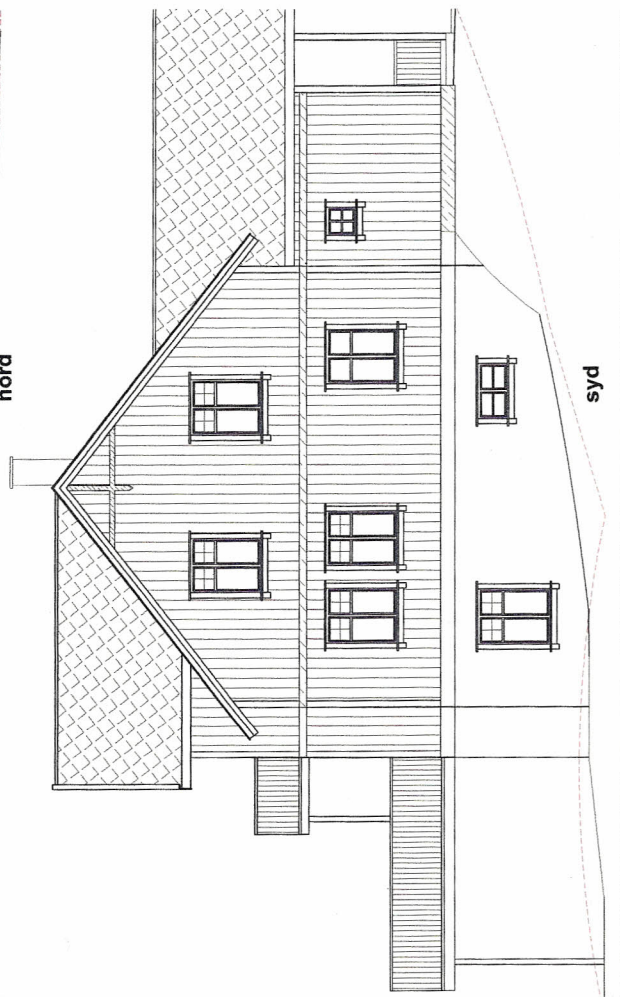
nord



øst

terreng før tiltak

terreng etter tiltak



syd